

The goal of this evaluation is that you can assess your current level, in order that your training at V.axess is as effective as possible for you.

The subject of this evaluation is your general knowledge of PPE for protection against falls from height, (knowledge of Petzl products, how they work, how they are used, PPE verification and your management experience.)


On completion of the evaluation please mark it yourself and follow our recommendations depending on your mark:

- 0 – 5 errors 

You have good knowledge of PPE and its use. You may undertake the 'Thorough examination of PPE for protection against falls from height' training module.

- 6 – 15 errors 

You have some knowledge of PPE and its use; some topics may require extra effort to understand, however you may undertake the 'Thorough examination of PPE for protection against falls from height' training module.

- 16 errors or more 

We would advise you to visit the "PPE Inspection" area of the Petzl.com website and practise inspecting items of PPE. Please retake this test to check your knowledge before undertaking the 'Thorough examination of PPE for protection against falls from height' training module.

For your own interest, we ask you to please do this test in examination conditions.



Please tick **the box or boxes** to indicate your preferred answers

1 PPE means:

- Professional Individual Equipment
- Personal Protective Equipment
- Industrial Protection Equipment

2  means:

- European community
- Conforming to manufacturing standarts
- Conforming to European directive minimum requirement

3 The lifetime of Petzl metallic products is:

- 3 years
- 5 years
- Unlimited

4 I can work alone on a rope access building site:

- YES NO

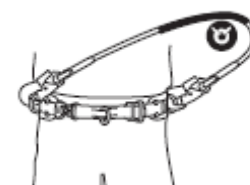
5 Name the knot drawn below:

- Clove hitch
- Bowline knot
- Figure eight knot on a bight
- Double figure eight knot



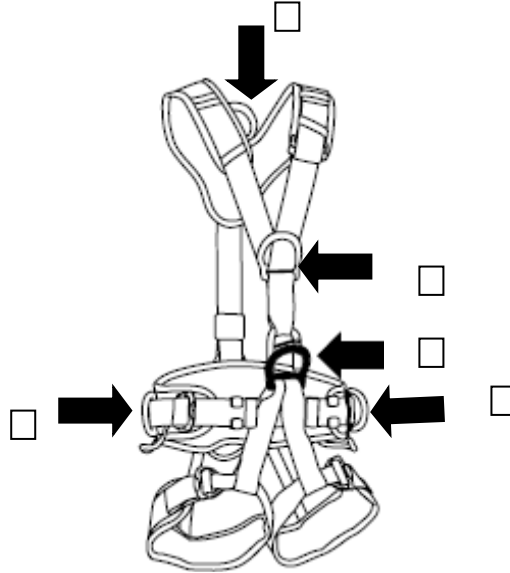
6 Can we use this equipment as a fall arrest system?

- YES
- NO



EN 358
NIT326

7 A mobile fall arrest device (EN 353) should be connected to:



8 What does this number mean:

CE 0197

- Life length of the product
- Manufacture date of the product
- Number of the notifying body
- Identification number of the batch

9 22kN =

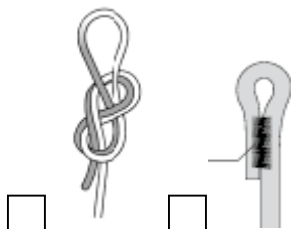
- 22 kgf
- 2200 kgf
- 220 kgf

10 Which is the correct diameter for the ASCENSION B17?

- 8-13 mm
- 7 -11 mm
- 12- 16 mm



11 Which is the strongest?

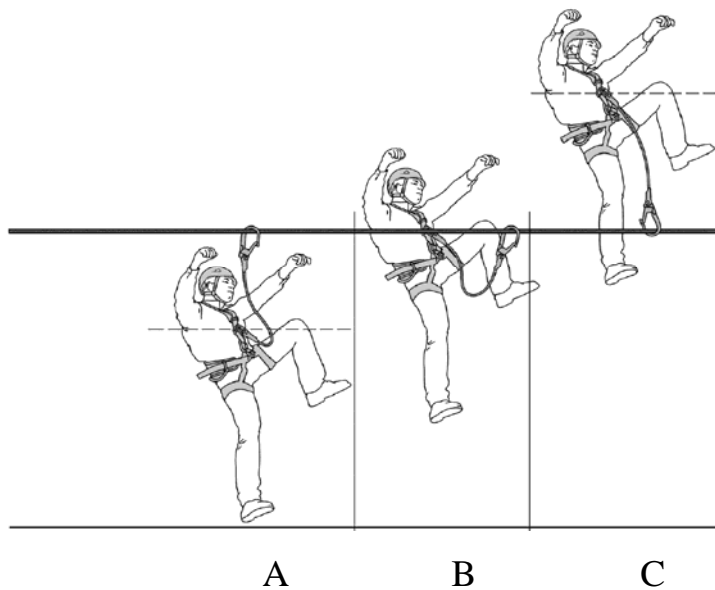


12 You should make a detailed PPE equipment verification every:

- 12 months
- 6 months
- Before and after use
- As indicated on the technical notice
- In accordance with your company policy

13 Tick the correct answers

	Fall factor 0	Fall factor 1	Fall factor 2
A			
B			
C			



14 The technical notice is:

- Legally required to be supplied with the product
- Given together with the invoice
- Downloadable on the web

15 The locking buckle of your helmet is broken, what do you do?

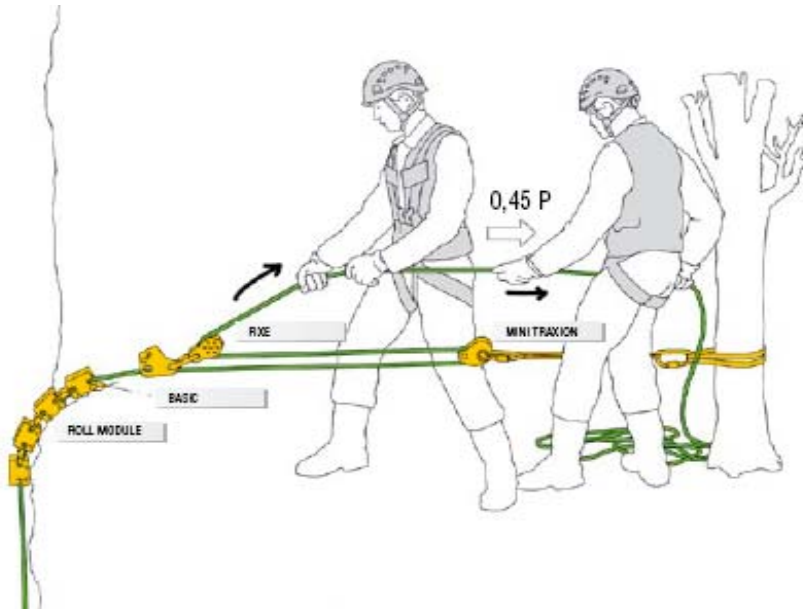
- Destroy the helmet
- Send it back to the store
- Send it to the after sales service if it's still under warranty
- Repair the helmet myself

16 Impact force in relation to items of PPE is:

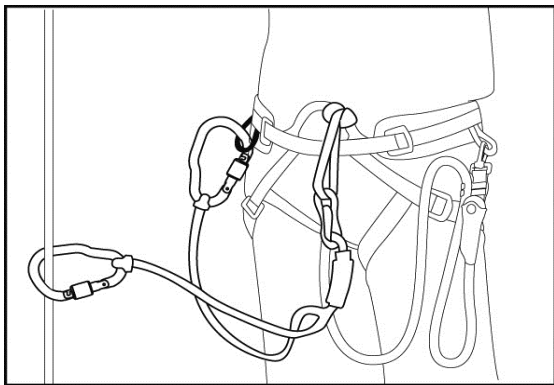
- The impact when we crash in to the ground or an obstacle
- The dynamic limit of elasticity of a rope during a fall
- The final force which we feel, when all the elasticity of the equipment has intervened

17 Give the theoretical mechanical advantage:

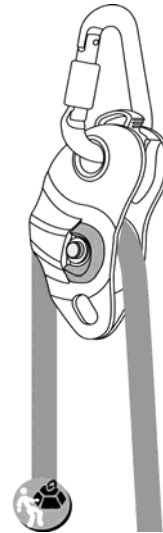
3:1	2:1	1:1
<input type="checkbox"/>	<input type="checkbox"/>	<input type="checkbox"/>



18 Tick the correct answer



YES NO



YES NO

19 The user should check their PPE:

- Every 12 months
- Every month
- Before and after use
- As indicated on the technical notice
- Depending on their training

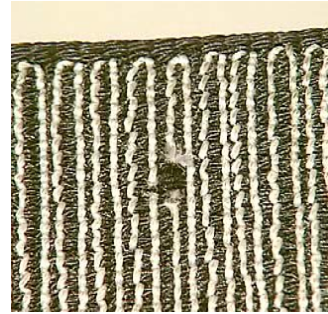
20 You are inspecting the items shown. Are they acceptable or not?



YES NO



YES NO



YES NO



YES NO



YES NO



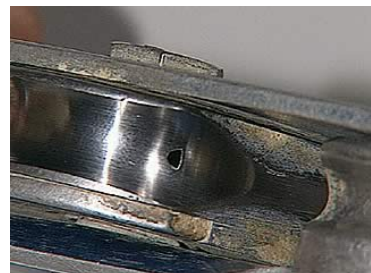
YES NO



YES NO



YES NO



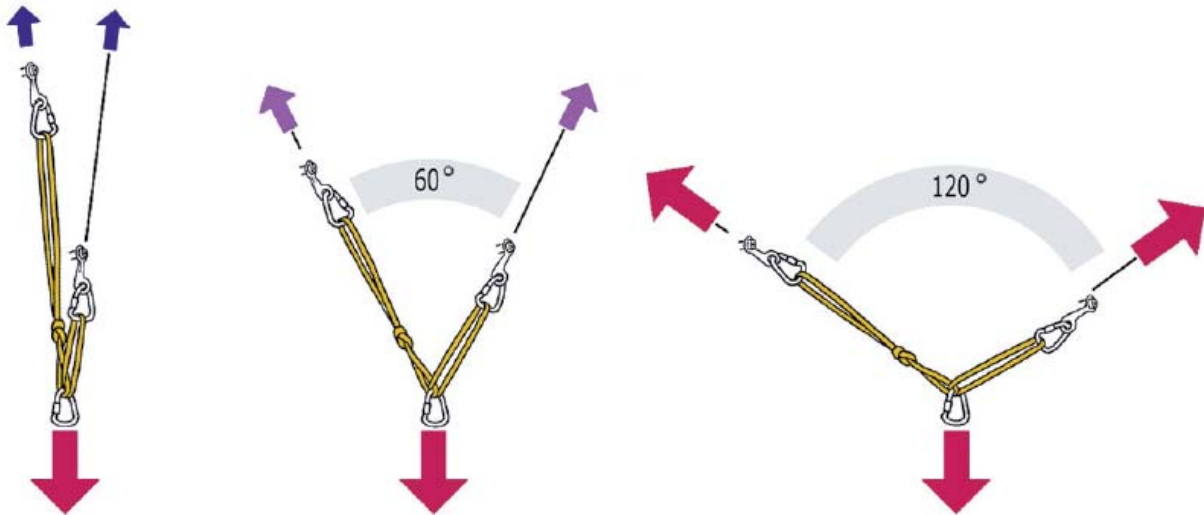
YES NO

21 Name this knot:

- Clove hitch
- Bowline
- Figure eight on a bight
- Bunny knot/Double figure eight on a bight



22 What are the forces on these ice screws?



	A	B	C
A	50%	60%	100%
B	50%	60%	100%
C	50%	60%	100%

23 I regularly manage groups of:

- 1 to 4 people
- 1 to 8 people
- more than 8 people

My main activity is focused on:

- Sport
- Training
- Safety of People
- Works
- Rescue

I am personally certified for the following activities:

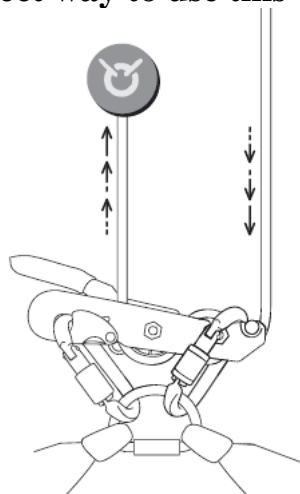
- Sport
- Training
- Work
- None

I have been managing groups for:

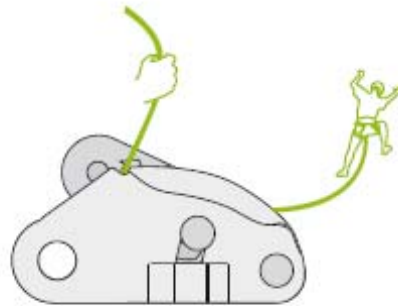
- Less than a year
- 1 to 2 years
- 2 to 5 years
- more than 5 years

24 You find some defective equipment, what do you do?

- I throw it in the bin
- I give it to the competent person for PPE inspection in the company
- I send it to the manufacturer to have it destroyed
- I take it apart, to re-use the pieces which aren't damaged

25 Is it the correct way to use this equipment? OK NO**26 My harness is new and it's still in its original packing. It's more than 10 years old. Can I keep it?** YES NO

27 **Tick the correct answer:**



OK

NO

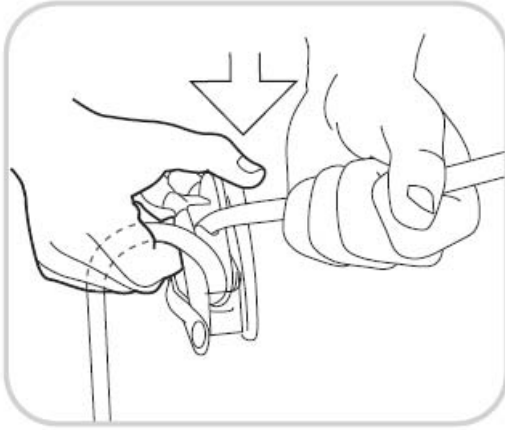
28 **The lifetime starts:**

- At the first use
- At the day I purchase it in the store
- It's the general manager's decision
- At the date of manufacture (identified on the product)

29 **I want to customize my textile equipment:**

- I can write on the webbing
- I can write on the comfort components
- I can insert a metallic plate in the webbing
- I can sew textile component on my harness
- I can write on the identification label of the product

30 Is this correct usage?



YES NO



YES NO

31 Is this correct usage?



YES NO

32 The Petzl warranty time is:

- 3 years
- 5 years
- unlimited

ANSWER SHEET:

1 PPE means:

- Professional Individual Equipment
- Personal Protective Equipment
- Industrial Protection Equipment

2 means:

- European community
- Conforming to manufacturing standards
- Conforming to European directive minimum requirements

3 The lifetime of Petzl metallic products is:

- 3 years
- 5 years
- Unlimited

4 I can work alone on a rope access building site:

- YES
- NO

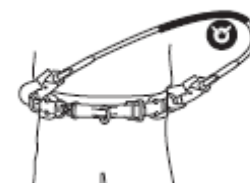
5 Name the knot drawn below:

- Clove hitch
- Bowline knot
- Figure eight knot on a bight
- Double figure eight knot

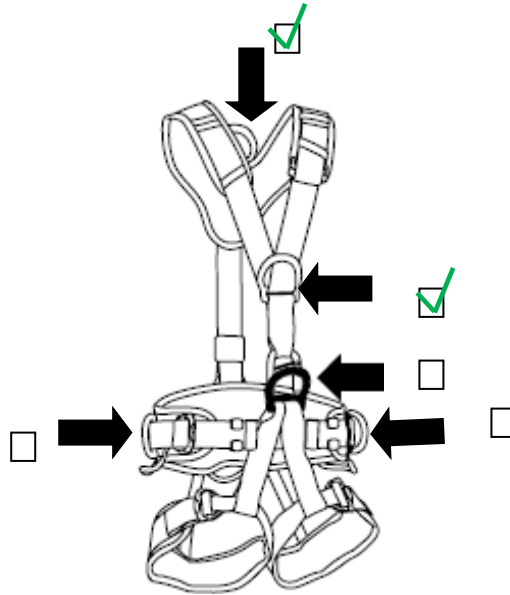


6 Can we use this equipment as a fall arrest system?

- YES
- NO

EN 358
NIT326

7 A mobile fall arrest device (EN 353) should be connected to :



8 What does this number mean :

CE 0197

- Life length of the product
- Manufacture date of the product
- Number of the notifying body
- Identification number of the batch

9 22kN =

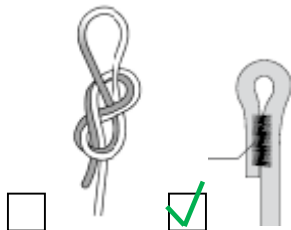
- 22 kgf
- 2200 kgf
- 220 kgf

10 Which is the correct diameter for the ASCENSION B17 ?

- 8-13 mm
- 7 -11 mm
- 12- 16 mm



11 Which is the strongest ?

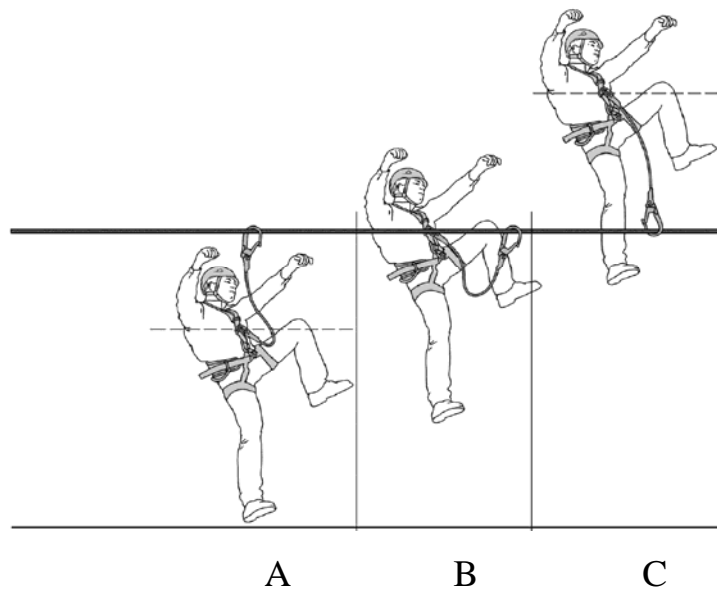


12 You should make a detailed PPE equipment verification every:

- 12 months
- 6 months
- Before and after use
- As indicated on the technical notice
- In accordance with your company policy

13 Tick the correct answers

	Fall factor 0	Fall factor 1	Fall factor 2
A	✓		
B		✓	
C			✓



14 The technical notice is :

- Legally required to be supplied with the product
- Given together with the invoice
- Downloadable on the web

15 The locking buckle of your helmet is broken, what do you do?

- Destroy the helmet
- Send it back to the store
- Send it to the after sales service if it's still under warranty
- Repair the helmet myself

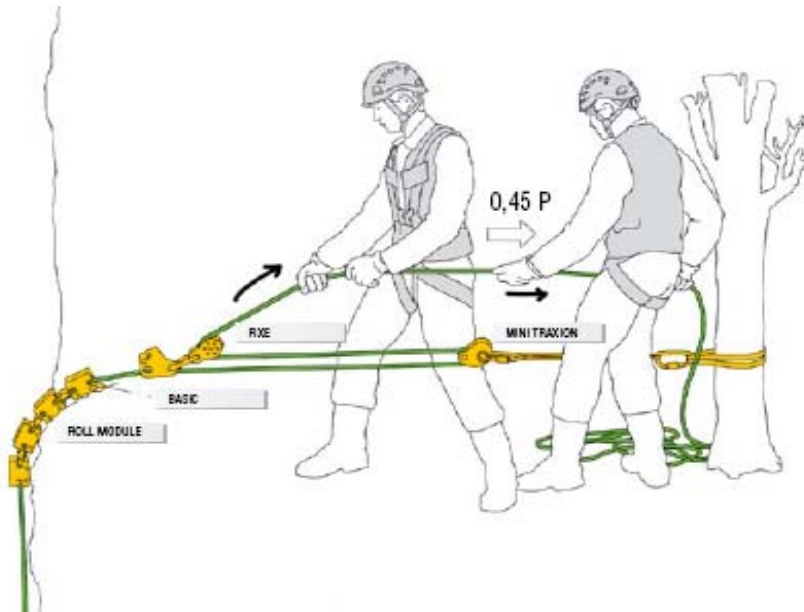
16 Impact force in relation to items of PPE is

- The impact when we crash in to the ground or an obstacle
- The dynamic limit of elasticity of a rope during a fall

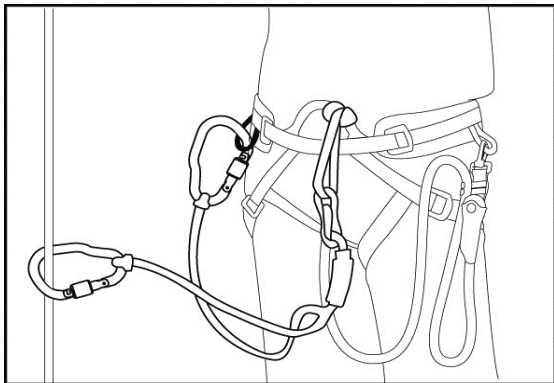
The final force which we feel, when all the elasticity of the equipment has intervened

17 Give the theoretical mechanical advantage

3:1	2:1	1:1
<input checked="" type="checkbox"/>	<input type="checkbox"/>	<input type="checkbox"/>



18 Tick the correct answer



YES NO



YES NO

19 The user should check their PPE :

- Every 12 months
- Every month
- Before and after use
- As indicated on the technical notice

Depending on their training

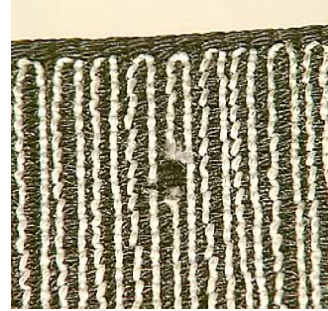
20 You are inspecting the items shown. Are they acceptable or not?



YES NO



YES NO



YES NO



YES NO



YES NO



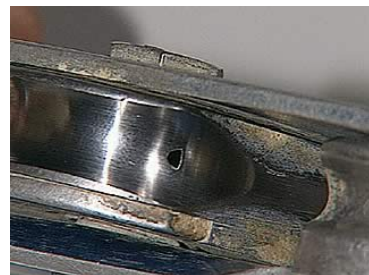
YES NO



YES NO



YES NO



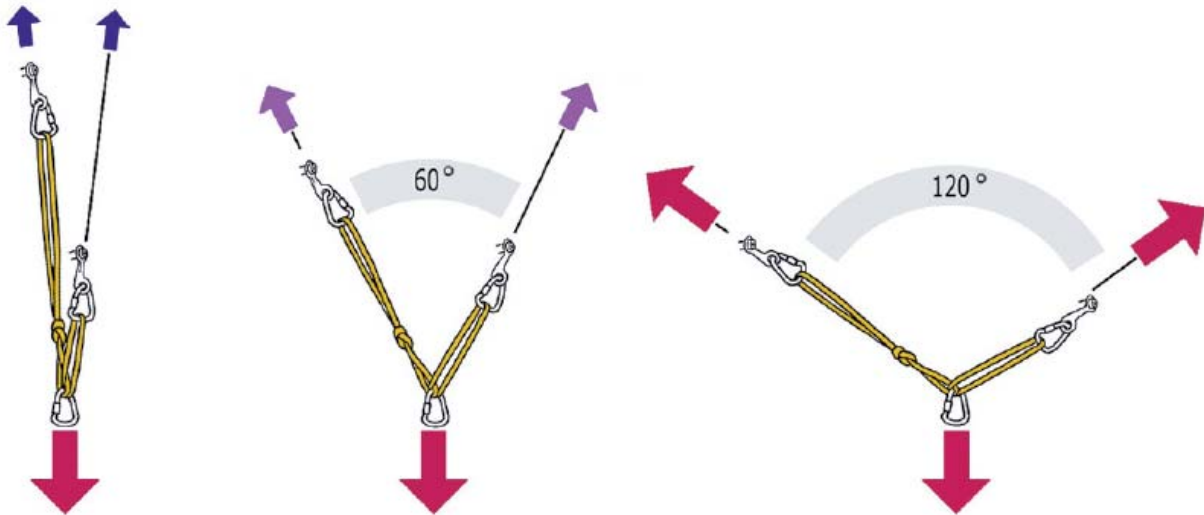
YES NO

21 Name this knot :

- Clove hitch
- Bowline
- Figure eight on a bight
- Bunny knot/Double figure eight on a bight



22 What are the forces on these ice screws ?



	A	B	C
A	50% ✓	60%	100%
B	50%	60% ✓	100%
C	50%	60%	100% ✓

23 I regularly manage groups of:

- 1 to 4 people
 1 to 8 people
 more than 8 people

My main activity is focused on:

- Sport
 Training
 Safety of People
 Works
 Rescue

I am personally certified for the following activities:

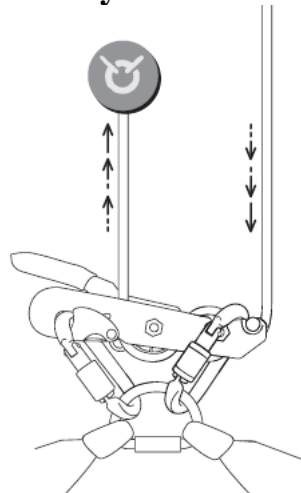
- Sport
 Training
 Work
 None

I have been managing groups for:

- Less than a year
 1 to 2 years
 2 to 5 years
 more than 5 years

24 You find some defective equipment, what do you do?

- I throw it in the bin
 I give it to the competent person for PPE inspection in the company
 I send it to the manufacturer to have it destroyed
 I take it apart, to re-use the pieces which aren't damaged

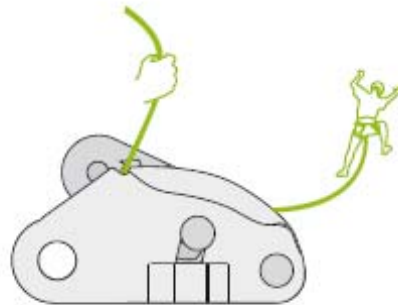
25 Is it the correct way to use this equipment ? OK NO

26 My harness is new and it's still in its original packing. It's more than 10 years old. Can I keep it?

YES

NO

27 Tick the correct answer:



OK

NO

28 The lifetime starts:

At the first use

At the day I purchase it in the store

It's the general manager's decision

At the date of manufacture (identified on the product)

29 I want to customize my textile equipment:

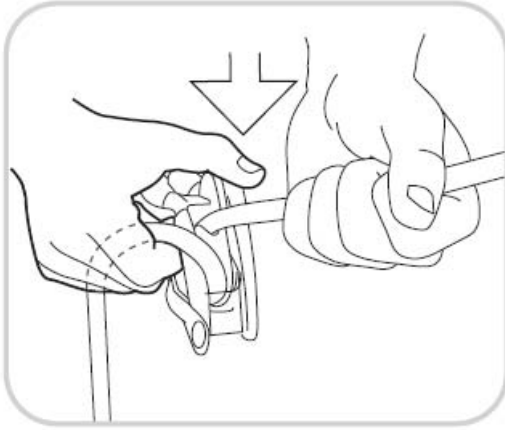
I can write on the webbing

I can write on the comfort components

I can insert a metallic plate in the webbing

I can sew textile component on my harness

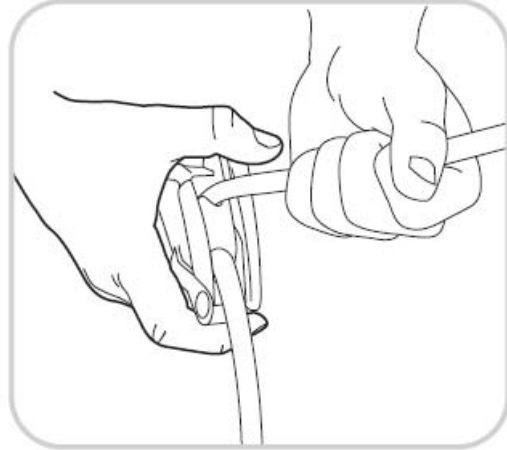
I can write on the identification label of the product

30 Is it used correctly?

YES



NO



YES



NO

31 Is it used correctly?

YES



NO

32 The Petzl warranty time is:

3 years



5 years



unlimited